

If you don't see graphics below, click or go to <http://www.mprecords.com/asid/Designer%20Notes/ASIDNewsletterNovember10.htm>
If you want to print this newsletter, simply click your print button. You might have to print from the link above.

DESIGNER NOTES



INDIANA

November 2010

The Newsletter for Members of ASID Indiana Chapter

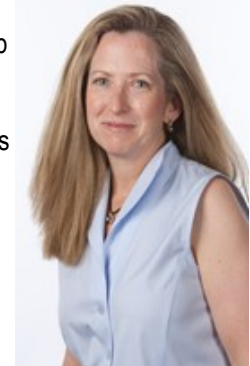
News Inside

- [President's Message](#)
- [Upcoming Events](#)
- [Coffee Meeting](#)
- [Natural Stones](#)
- [CEU Super Saturday](#)
- [ASID Step Workshop](#)
- [Welcome New Members](#)
- [Industry Partners](#)

President's Message

This has been a busy fall for ASID Indiana as we strive to find new ways to provide the chapter's members with programs that will help them grow personally and professionally.

The newly designed ASID Indiana website, www.asidindiana.org, is up and running. DSA Publishing, the new host for the website, hosts 26 additional ASID chapter websites around the country. A work in progress, the site is still evolving, so expect to see additional changes and improvements. Allied and Professional members of ASID Indiana may include their name and contact information on the designer referral service. There is no cost; however, you must opt into this service. An upgrade to a premier listing, which allows members to include portfolio photos and website links, is also available through DSA for \$250. The site has instructions on how to add a listing. For assistance with registration, contact DSA at designerreferrals@asidindiana.org.



Over the years, many members have expressed an interest in taking the NCIDQ exam, and have asked to have the STEP class (an NCIDQ exam prep class taught and organized by ASID) taught in Indiana. Stacy Riley, Director of Professional Development, is organizing a STEP class for January 2011. In order to offer the class, there must be 10 people signed up to take it. Please contact Stacy if you would like to take the class or learn more about it. Information is also available at the national ASID website:

<http://www.asid.org/career/step/>. I took the STEP class (in another city) when I studied for the NCIDQ exam, and found it invaluable.

Keep an eye out for information on the December Holiday Party. Stephen Taylor and Agnes Hannah are planning a wonderful event. Once the date and venue have been confirmed, a **Save the Date** email will be sent out. Some additional impromptu events are in the works as well.

Audrey Millar, ASID, RID
President
Indiana Chapter ASID

[--return to top--](#)



ASID Indiana Chapter
8945 South Street
Fishers, IN 46038

Phone: (317) 585-9640
Fax: (317) 841-8206

e-mail
chapadmin@asidindiana.org

www.asidindiana.org

ASID Indiana Chapter
2010 Board of Directors

Upcoming Events

President

Audrey E. Millar, ASID
(317) 823-9148

designeraudrey@msn.com

President-Elect

Bruce A. Pollert, ASID
(812) 376-4044

bruce@pollertdesign.com

Communications Director

Diana Bryant, Allied Member, ASID
(317) 209-0085

dbinteriors2003@yahoo.com

Financial Director

Patrick J. Schmidt, ASID
(317) 569-1301

pat@jbakerinteriors.com

Professional Development Director

Stacy Riley, Allied Member, ASID
(317) 417-0770

compassdesignservices@yahoo.com

Membership Director

Cynthia C. Walker, Allied Member,
ASID
(317) 431-6240

walkerdesigns@yahoo.com

At-Large Board Member

Robin Bradford, Allied Member,
ASID

(317) 770-7317

robin@anvilhost.com

Student Representatives to the Board

Stephanie Richard, Student Member
ASID

(812) 449-8928

richarsf@iupui.edu

Stephanie Kueber, Student Member
ASID

(812) 483-1263

skueber@bsu.edu

ASID Indiana Chapter Chapter Administrator

Mark Records

(317) 585-9640

Fax: (317) 841-8206

chapadmin@asidindiana.org

Mission Statement

The Indiana Chapter of the American Society of Interior Designers

December

12/02/10

Tour the JW Marriott

5:00 pm MUST Arrive on Time

Meet in Fairfield Inn & Suites Lobby

501 W. Washington Street, Indianapolis, Indiana 46204

Dress Apparel accordingly to construction site.

12/09/10

ASID Holiday Party at IMA

6pm Tour of Warhol Exhibit and Dinner.

January 2011

ASID Indiana STEP Workshop

Important Dates:

1/7/2011: Registration Deadline

1/21-23/2011: Workshop

4/1-2/2011: Exam

Sign up now at www.asid.org/designer/step

1/27/11

Coffee Chat

4 pm at Panera Bread located at 465 & west 86 Street

February 2011

2/25/11

Design Interaction Day

Details to follow

[--return to top--](#)

Coffee Meeting



ANOTHER SUCCESSFUL ASID MEMBERSHIP COFFEE....

Once again some ASID members met at Southport's Panera Bread and discussed some of the upcoming events for ASID Indiana members. Including the Super Saturday CEU's, Design Interaction Day on February 25th in Columbus Indiana, supporting the Catholic Charities of Indianapolis this next year, and the upcoming Holiday Party at the IMA were just some of the items of discussion.

Our upcoming coffee will be **Thursday, January 27th, 2011 at 4 pm** at the Panera Bread at 465 and West 86th Street. Please join us! We usually meet for 1 to 1.5 hours and there's nothing better than winding down

promotes ethical practice and design excellence through professional education, networking, public awareness and the advocacy of interior designers' right to practice.

the day with a great cup of Joe and sharing the best and upcoming design news with your favorite ASID colleagues!

[--return to top--](#)

Natural Stones



Sedimentary, Metamorphic and Igneous are not names of the newest Transformers but the basis of stone formations. On October 12, 2010, Joshua Levinson, President of Artistic Tile informed a group of twenty-four on the various different types of natural stone, common quarry's, fabrication, and finishing methods. The event was hosted by Architectural Brick & Tile which by the way did a superb job on providing space and food for this CEU event. A special thanks to those involved in organizing this event.



[--return to top--](#)

CEU Super Saturday!

ASID Indiana CEU Super Saturday started with coffee and registration at 8:15 am and extended into a variety of educational programs for those 28 attending the event. Nancy Wright of Knoll presented "Defining Modern," a traveling exhibit for the Philadelphia Museum of Art. The exhibit features illustrative discussion of Florence Knoll's contribution to interior design over the last three years. Next, Delta faucet presented water delivery systems for green building. The lecture provided the audience with many water saving products already available to assist in saving water in the kitchen and bath. Nancy Wright

finished the morning session with the field of ergonomics describing in detail the complexity and the evolution related to the modern office.



After lunch, Kathy Bultman presented materials and information on the proper application for a variety of types of resilient flooring. Jamie Gibbs of Jamie Gibbs & Associates provided information, resources, and instructions on maintaining vintage textiles. The program ended with Jeffery Dross of Kichler Lighting detailing the importance of LED lighting into our current living spaces. He also instructed on the history, energy efficiency and technology of LED aiding designers in this new light source for residential projects.



Thank you to Kirby Risk for hosting this event and Jimmy Johns for the box lunches. Also, a special thanks to the hard work of Robin Bradford and Stacey Riley in organizing this day of education.

[--return to top--](#)

ASID STEP Workshop

The American Society of Interior Designers has long recognized the key role that the NCIDQ examination plays in design practitioners' career plans. Passage of this rigorous test signifies the hallmark of professionalism in the interior design community, and alerts the public to the expertise and experience of the designer who has met this challenge. To that end, ASID created the STEP program to provide a broad perspective of the issues and information pertinent to the NCIDQ exam.



ABOUT THE WORKSHOP

The STEP workshop is periodically conducted nationwide and is comprised of 20 hours of instruction over a 2 1/2-day period. Participants have the opportunity to experience practice exams patterned after the newest NCIDQ and, with the guidance of experienced

instructors, determine which areas require further preparation. Workshop participants are provided with comprehensive workbooks that includes practicum exercises and online multiple-choice exams similar to those in the NCIDQ exam. These practice tests are administered and thoroughly reviewed during the workshop.

IMPORTANT DATES

Registration Deadline: January 7, 2011
 Workshop Dates: January 21 – 23, 2011
 NCIDQ Examination: April 1 - 2, 2011

WORKSHOP AGENDA

Friday, January 21: 2 – 8 pm
 Saturday, January 22: 8 am – 6:30 pm
 Sunday, January 23: 8 am – 3:30 pm

WORKSHOP LEADER

Terry Rothgeb, ASID

REGISTRATION

Ready to Register? Go to www.asid.org/designer/step
 ASID Members: \$325
 Nonmembers: \$445

[--return to top--](#)

Welcome ASID Indiana New Members

Pamela Louise Young, Student Member
 ASID
 712 W Calvert St
 South Bend IN 46613-1902
 (574) 233-1210
 soladylike_50@yahoo.com

Ms. Cheryl Darlene Schaefer, Student
 Member ASID
 423C Cypress St
 Newburgh IN 47630-1311
 (812) 490-6634
 darleneschaefer13@Yahoo.com

Olivia Anne White, Student Member
 ASID
 2104 N Rosewood Ave
 Muncie IN 47304-2364
 (734) 646-7951
 oawhite@bsu.edu

Megan Gunselman, Student Member
 ASID
 1084 W Division Rd
 Jasper IN 47546-8913
 (812) 309-8367

Alexis Nioka Butler, Student Member ASID
 1392 S Sherman St
 Columbia City IN 46725-7530
 (260) 503-9987 alexisnioka@hotmail.com

Mrs. Dorame Blair Deadmond, Student
 Member ASID
 22939 Quinn Rd
 Lakeville IN 46536-9756
 (574) 784-3513
 doramedeadmond@embarqmail.com

Mrs. Natalie J Mendez, ASID, IIDA, IDEC,
 LEED AP
 135 Lane 415 Jimmerson Lk
 Fremont IN 46737-8910
 (310) 295-1506 NatalieJMendez@gmail.com

mgunselman_04@hotmail.com

Industry Partners

Antex Designs, Inc.
 Bellacor.com
 Bernhardt Furniture Company
 Broan NuTone
 BSH Home Appliances - Thermador,
 Bosch, Gaggenau
 California Closets
 Cambria
 Century Furniture/Heirloom Furniture
 Christofle
 Closet Factory
 Contract Wallcoverings, Inc.
 Cosentino USA
 Crestron Electronics
 Currey & Company
 Delta Faucet Company
 Designer Glass Solutions, Inc.
 DR. Shower Door & Mirrors LLC
 Drapery Street
 DSA Publishing & Design
 Edelman Leather
 Electrolux Major Appliances
 Excel Dryer, Inc.
 Ferguson
 Fine Art Lamps
 Flexco
 Grabill Cabinet
 Habersham
 Hansgrohe, Inc.
 Heirloom Oriental Rug Cleaning
 Insidesign, Inc
 InterfaceFLOR Commercial
 International Design Guild 1

IntriG
 Kitchens & Interiors, Inc.
 Knoll
 Kohler Interiors
 LAMPS PLUS Professionals
 Langenwaller Carpet Cleaning & Stain Removal
 Lorts Manufacturing
 Louisville Tile Distributors, Inc.
 Lutron Electronics Co.,Inc.
 Mohawk Floorscapes & Mohawk ColorCenter
 Ovation Audio Video
 Paoli, Inc..
 Pittsburgh Paints/PPG Industries, Inc.
 Poly-Wood Inc
 ProSource Wholesale Floorcoverings
 Robert Allen Group
 ROHL LLC
 Scott Group Custom Carpets
 Sonance
 STAINMASTER Carpet
 Stylmark
 Sunbrella
 The Dixie Group
 The Floor Club
 Theodore Alexander
 Versteel
 Whirlpool Corporation
 Williams-Sonoma, Inc
 Wilsonart International
 WinWholesale

[--return to top--](#)

This document was created with Win2PDF available at <http://www.win2pdf.com>.
The unregistered version of Win2PDF is for evaluation or non-commercial use only.
This page will not be added after purchasing Win2PDF.